

# GUTTERCREST

## GENERAL INSTALLATION GUIDELINES

### Half Round & Beaded Deep Flow Gutter

#### BEFORE YOU START

We advise that you ensure the fixing background (e.g. fascia board) is securely fixed, level, and able to cope and support the weight of the gutter at full capacity.

Also that the roof overhang is correct.

Start at the right hand edge of the building and work to the left (looking externally in elevation). Starting at a stopend or corner if possible.

**\*Position of Gutter:** It is at the discretion of the installer what height they would like to fix their fascia brackets (i.e. gutter height on the fascia). Figure 1 is an adequate solution and more resistant to sliding snow (snow-loading) than figure 2.

However, the disadvantage of figure 1 is the fact that it is possible in high winds for rain fall to get behind the gutter and run down the fascia / wall. It may also be possible for rain to over shoot the gutter should it be mounted too low. Figure 2 should overcome these problems.

A decision should be made taking the local climate and average snowfall into consideration. Figure 2 should be favourable for most of the UK.

#### ADDITIONAL INFORMATION

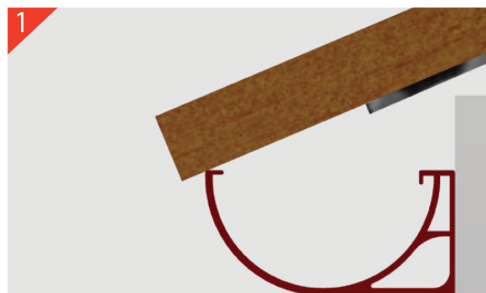
Buildings without fascias may need one of the below additional brackets. These are available for all sizes of half round & beaded deep flow gutters.

**Mortar Brackets:** Have spikes which can be hammered directly into an opening in the mortar. An 'L' shaped one piece item which the fascia bracket is mounted to once in position. To be fixed to a true line and level.

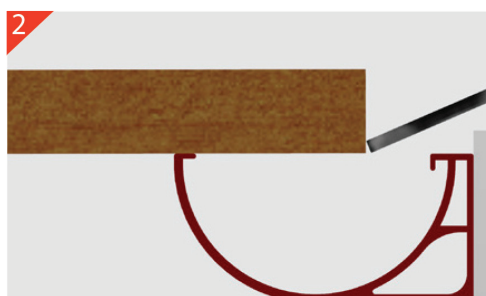
**Rise & Fall Brackets:** Also have spikes, but use threaded bar for height adjustment, it is important that the threaded uprights are all in line and level before mounting the fascia bracket. Not recommended for heavy snow-loading as the threaded bar may become a weak spot.

**Rafter Brackets:** A one piece item which is fixed to the side of the rafter. Spaces between brackets is dictated by the rafter spacing, this should not exceed 1000mm.

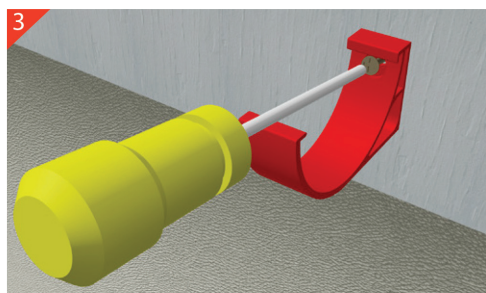
For additional information about these brackets please contact our technical department. We can manufacture special brackets on request.



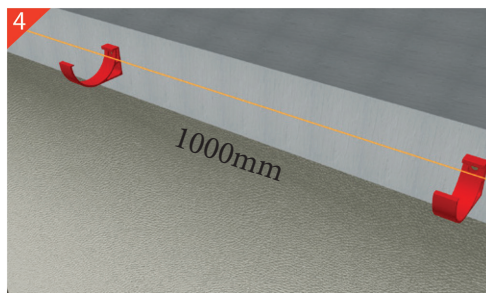
A straight edge can be placed along the pitch of the roof to determine the position of the fascia bracket.



Alternatively use a spirit level against the lowest point of the roof tile to determine the position of the fascia bracket.\*



Once the position is established the first bracket can be fixed by a 38 x 5 steel screw (Guttercrest GM1).



Repeat the above steps at the other end of the gutter run. Then use a string / laser line between the two ends and continue to fix the fascia brackets at 1000mm centers. We recommend a level fall, if a fall is required - max. 1 : 600.

**System Testing:** If testing is required it should be done once the system is complete. To test, the outlets should be blocked and the gutters filled to two thirds of capacity. Leave for about 5 minutes and ensure there are no leaks in the joints.

Once satisfied unblock the outlets, discharging the water. This will test the rainwater pipes have no leakage. Any remedial works should not be undertaken, and retested until satisfactory. Note any stripped joints should be cleaned with sealant cleaner (GM34).

**Storage of Coated Materials:** Guttercrest supplies all products with a protective polythene wrapping, however please make sure that if stored outside it is protected from rainfall and direct sunlight. If water gets inside the packaging then is exposed to the sun, this will permanently 'watermark' the powder coating. Store in a safe place to avoid damage, especially to the coating.

**COSHH:** All sealants and paints purchased from Guttercrest have the relevant safety information on the labels, however if more in-depth information is required full COSHH sheets can be downloaded from our website.

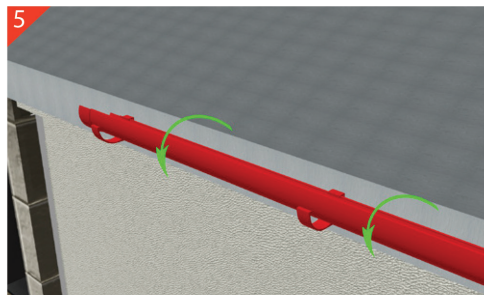
### EQUIPMENT REQUIRED

- Spirit Level / Straight Edge
- Phillips Screwdriver or attachment
- String or Laser line
- Hacksaw or jigsaw
- Drill with 4.8mm Bit (GM50)
- Mastic Gun
- Rivet Gun (GM67)

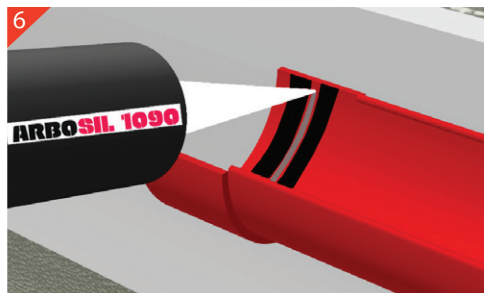
### GUTTERCREST FIXINGS / SEALANTS

GM1	38 x Nr14 gutter fixing
GM201	4.8mm Ali sealed rivet
GM30	400mm Arbosil 1090 silicone
GM32	12m Arboseal GZ butyl tape
GM40	Touch up paint

*If Guttercrest fixings are not used, then wherever possible use stainless steel. Sometimes self drillers need to be carbon steel.*



The Gutter is then rolled into position, make sure the union (joint strap) is on the left side, and the gutter clicks securely into the brackets. (It may be easier to perform step 6 on a workbench before doing this).



To join the next length of guttering, lay 2 strips of butyl tape (GM32) 10mm apart, inside the joint strap of the gutter. The 10mm gap is then liberally gun filled with the recommended silicone sealant (GM30). The silicone is left proud with no excess removed.



Next the male end of the next gutter or accessory is firmly bedded on to the silicone / butyl joint, ensuring that the top of the married lengths are aligned. A sealed rivet (GM201) is then used to firmly secure the jointing of lengths, inserted through a site drilled hole marked with a 3mm hole in the bottom of the jointing strap, the silicone inside will further seal the rivet.

#### IMPORTANT

Polyester powder coated gutters should have all rivet heads and cut ends touched up with compatible paint. This is crucial with marine environment coatings.

Touch up paint is available in all colours directly from Guttercrest, Product Code - GM40.

**Note: Half round gutter shown on all animations**