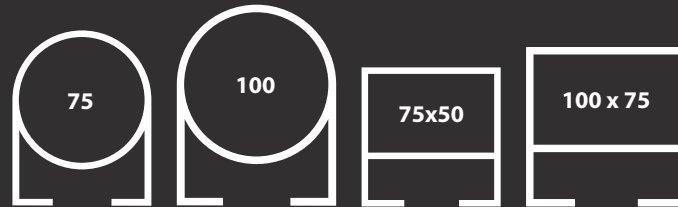


High Security Downpipes

A range of downpipes for use where a high level of security is required. Pipes have concealed fixings and are designed to be anti-climb and vandal resistant.

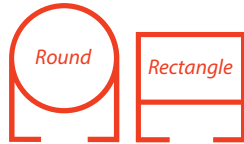


HIGH SECURITY DOWNPIPE SYSTEM

DOWNPIPE LENGTHS

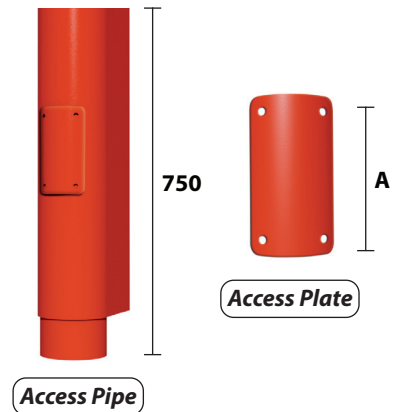
PIPE (mm)	3m	1.5m	OTHER SPECIFY LENGTH	WALL THICKNESS	A (mm)
75	RW2HS/1	RW2HS/4	RW2HS/6	2.5	50
100	RW3HS/1	RW3HS/4	RW3HS/6	2.5	50
75 x 50	RW32HS/1	RW32HS/4	RW32HS/6	2.5	50
100 x 75	RW43HS/1	RW43HS/4	RW43HS/6	2.5	50

Typical high security pipe profiles:



ACCESS PIPES & PLATES

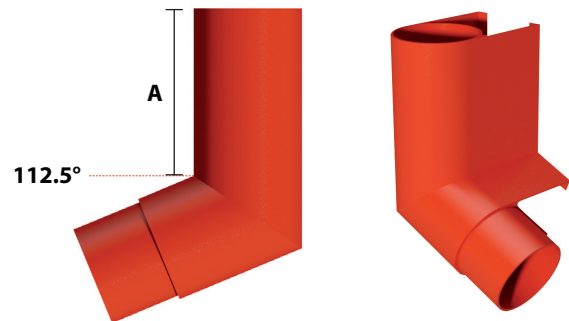
PIPE (mm)	ACCESS PIPE COMPLETE WITH PLATE	ACCESS PLATE	A (mm)
75	RW2HS/8	RW2HS/9	100
100	RW3HS/8	RW3HS/9	130
75 x 50	RW32HS/8	RW32HS/9	100
100 x 75	RW43HS/8	RW43HS/9	130



BENDS

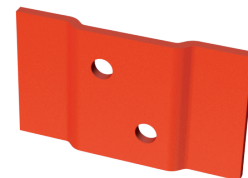
PIPE (mm)	BEND	A (mm)
75	RW2HS/21	100
100	RW3HS/21	100
75 x 50	RW32HS/21	100
100 x 75	RW43HS/21	100

When ordering bends please state Left/Right.



PIPE BRACKETS

PIPE (mm)	75	100	75 x 50	100 x 75
	RW2HS/21	RW2HS/21	RW2HS/21	RW2HS/21

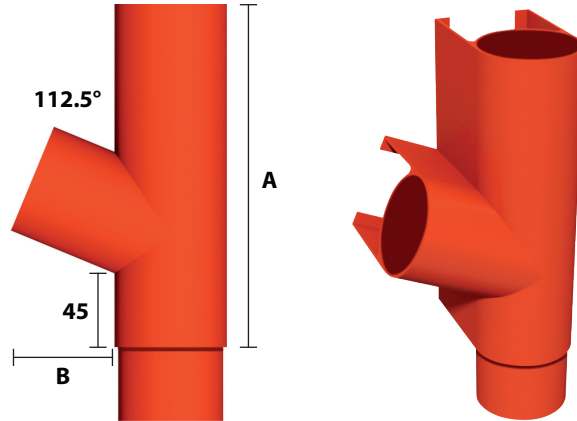


HIGH SECURITY DOWNPIPE SYSTEM

BRANCHES

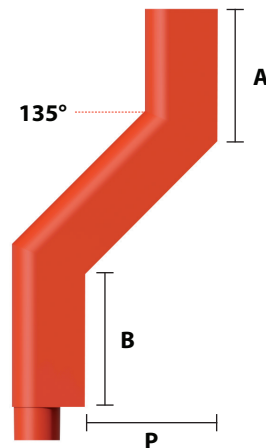
PIPE (mm)	BRANCH	A (mm)	B (mm)
75	RW2HS/11	235	70
100	RW3HS/11	260	80
75 x 50	RW32HS/11	235	70
100 x 75	RW43HS/11	260	80

When ordering branches please state left or right. (Left hand shown)



PLINTH OFFSETS

PIPE (mm)	OFFSET	A (mm)	B (mm)	P (mm)
75	RW2HS/23	200	200	Please state size required
100	RW3HS/23	200	200	
75 x 50	RW32HS/23	200	200	
100 x 75	RW43HS/23	200	200	



2 PIECE ADJUSTABLE SWAN NECKS

MAXIMUM PROJECTION OF SWAN NECKS

PIPE (mm)	ONE PIECE STATE SIZE	MAXIMUM PROJECTION OF SWAN NECKS						OTHER	MINIMUM PROJECTION P
		300	450	600	900	1200			
75	RW2HS/25	RW2HS/26	RW2HS/27	RW2HS/28	RW2HS/29	RW2HS/30	Please specify A, B & P, projection angle RW?/31	95	
100	RW3HS/25	RW3HS/26	RW3HS/27	RW3HS/28	RW3HS/29	RW3HS/30		115	
75 x 50	RW32HS/25	RW32HS/26	RW32HS/27	RW32HS/28	RW32HS/29	RW32HS/30		115	
100 x 75	RW43HS/25	RW43HS/26	RW43HS/27	RW43HS/28	RW43HS/29	RW43HS/30		130	

One-piece Swan Necks also available

Square swan necks can be used with rectangular pipes to give increased flow.

Typical Swan neck Profiles:

