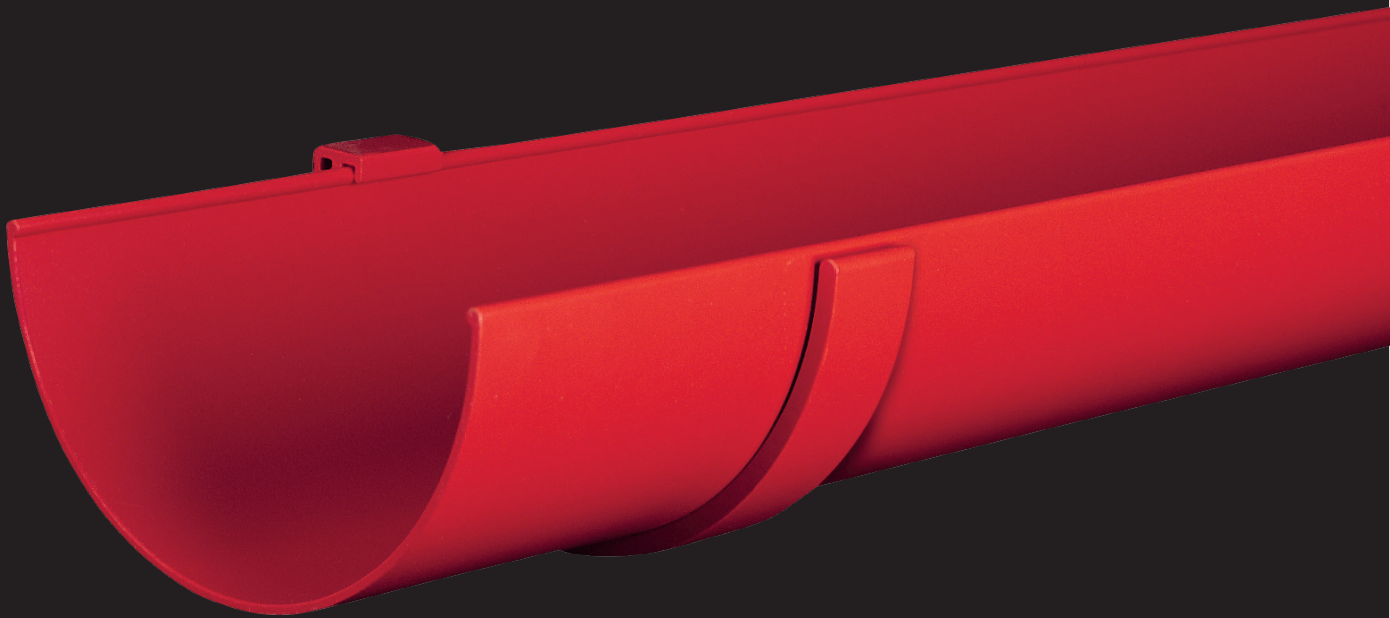


# Half Round Gutter System

Extruded aluminium half round gutters.  
Larger sizes can be manufactured in pressed aluminium.

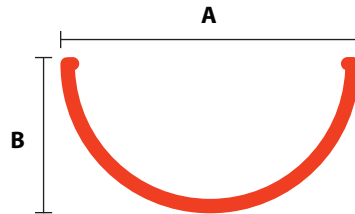


# GUTTERCREST

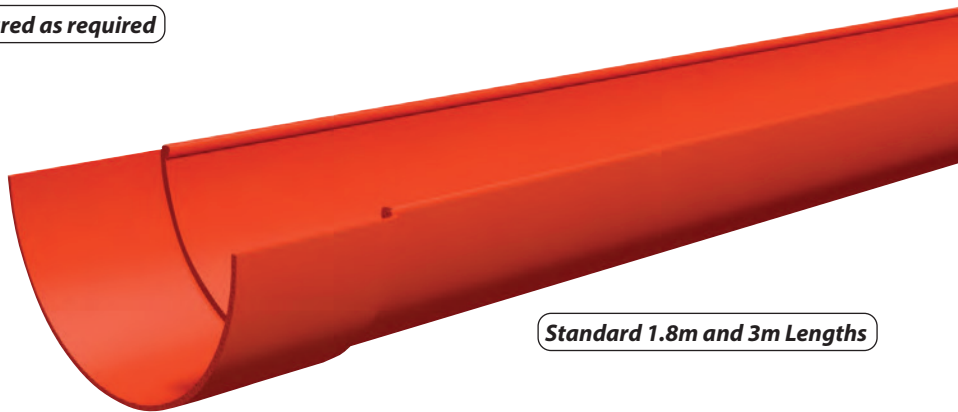
## HALF ROUND GUTTERING SYSTEM

### GUTTER LENGTHS

GUTTER (mm)	3m	1.8m	A (mm)	B (mm)	MATERIAL THICKNESS
100	HR1/1	HR1/2	100	50	2
115	HR2/1	HR2/2	115	57.5	2
130	HR3/1	HR3/2	130	65	2
150	HR4/1	HR4/2	150	75	2.5



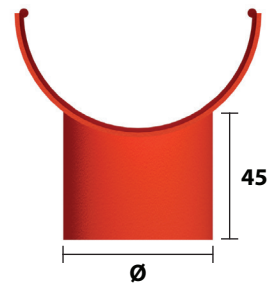
Other sizes manufactured as required



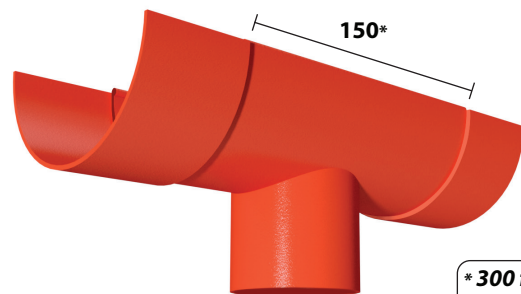
Standard 1.8m and 3m Lengths

### OUTLETS

GUTTER (mm)	ROUND			
	63 Ø	75 Ø	100 Ø	125 Ø
100	HR1/13	HR1/14	-	-
115	HR2/13	HR2/14	HR2/15	-
130	HR3/13	HR3/14	HR3/15	-
150	HR4/13	HR4/14	HR4/15	HR4/16



GUTTER (mm)	SQUARE AND RECTANGULAR				
	75 x 50	75 x 75	100 x 75	100 x 100	150 x 100
100	HR1/18	HR1/19	HR1/20	-	-
115	HR2/18	HR2/19	HR2/20	HR2/21	HR2/22
130	HR3/18	HR3/19	HR3/20	HR3/21	HR3/22
150	HR4/18	HR4/19	HR4/20	HR4/21	HR4/2

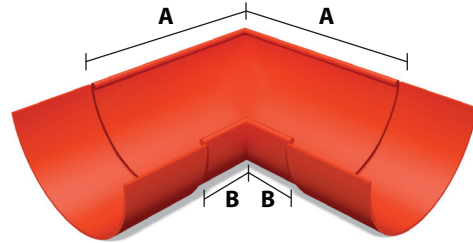


\* 300 for outlets over 100

## HALF ROUND GUTTERING SYSTEM

### ANGLES

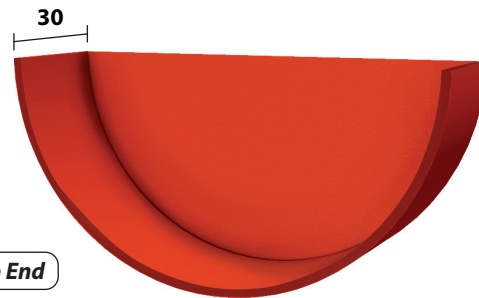
GUTTER (mm)	90°	A (mm)	B (mm)	135°	A (mm)	B (mm)	IRREGULAR ANGLE
100	HR1/3	130	30	HR1/5	70	30	HR1/7
115	HR2/3	150	30	HR2/5	75	30	HR2/7
130	HR3/3	160	30	HR3/5	85	30	HR3/7
150	HR4/3	180	30	HR4/5	90	30	HR4/7



*When ordering an irregular angle, state ref no. and actual fascia angle & note that A+B lengths vary subject to angle.*

### STOPENDS

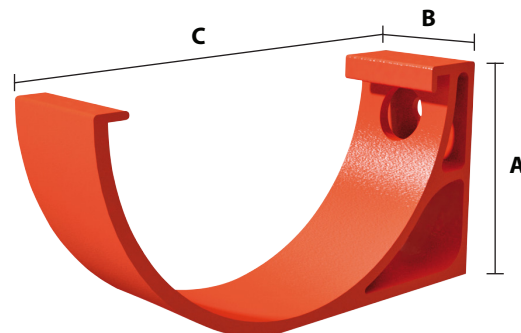
GUTTER (mm)	STOPEND
100	HR1/9
115	HR2/9
130	HR3/9
150	HR4/9



*External Stop End*

### FASCIA BRACKETS

GUTTER (mm)	3m	A (mm)	B (mm)	C (mm)
100	HR1/28	57	30	114
115	HR2/28	65	30	130
130	HR3/28	73	30	145
150	HR4/28	83	30	166



## GUTTER BRACKETS

### RAFTER & MORTAR BRACKETS

When it is not possible to fix guttering directly to the fascia, we can offer these alternative brackets.

#### HALF ROUND GUTTER BRACKETS

GUTTER (mm)	SIDE RAFTER	TOP RAFTER*	MORTAR BRACKET
100	HR1/29	HR1/30	HR1/31
115	HR2/29	HR2/30	HR2/31
130	HR3/29	HR3/30	HR3/31
150	HR4/29	HR4/30	HR4/31

#### BEADED DEEP FLOW GUTTER BRACKETS

GUTTER (mm)	SIDE RAFTER	TOP RAFTER*	MORTAR BRACKET
100	BDF1/29	BDF1/30	BDF1/31
125	BDF2/29	BDF2/30	BDF2/31
150	BDF3/29	BDF3/30	BDF3/31

#### MOULDED OGEE GUTTER (SMALL) BRACKETS

GUTTER (mm)	SIDE RAFTER	TOP RAFTER*	MORTAR BRACKET
100 x 75	MOG1/29	MOG1/30	MOG1/31
125 x 100	MOG2/29	MOG2/30	MOG2/31
150 x 100	MOG3/29	MOG3/30	MOG3/31

#### MOULDED OGEE GUTTER (LARGE) SIZES

We recommend that gutters of this size should be directly fixed & not bracketed.

#### VICTORIAN OGEE GUTTER BRACKETS

GUTTER (mm)	SIDE RAFTER	TOP RAFTER*	MORTAR BRACKET
110	VOG1/29	VOG1/30	VOG1/31
120	VOG2/29	VOG2/30	VOG2/31
130	VOG3/29	VOG3/30	VOG3/31
160	VOG4/29	VOG4/30	VOG4/31

#### BOX GUTTER (SMALL) BRACKETS

GUTTER (mm)	SIDE RAFTER	TOP RAFTER*	MORTAR BRACKET
100 x 75	BX1/29	BX1/30	BX1/31
100 x 100	BX2/29	BX2/30	BX2/31
125 x 100	BX3/29	BX3/30	BX3/31
150 x 100	BX4/29	BX4/30	BX4/31

#### BOX GUTTER (LARGE) SIZES

We recommend that gutters of this size should be directly fixed & not bracketed.

#### SHAPED BOX GUTTER BRACKETS

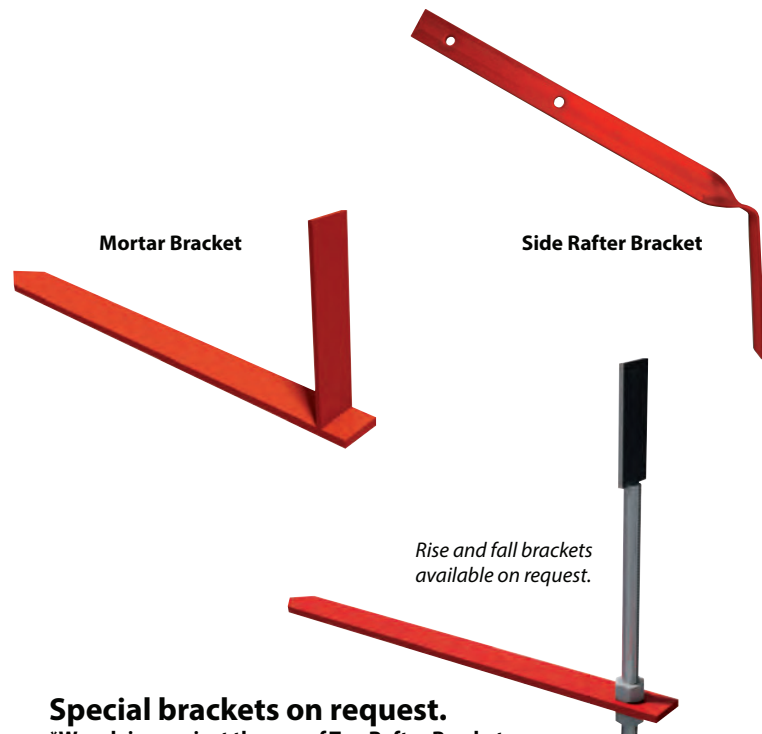
GUTTER (mm)	SIDE RAFTER	TOP RAFTER*	MORTAR BRACKET
100 x 75	SBX1/29	SBX1/30	SBX1/31
100 x 100	SBX2/29	SBX2/30	SBX2/31
125 x 100	SBX3/29	SBX3/30	SBX3/31
150 x 100	SBX4/29	SBX4/30	SBX4/31

#### RAKED BOX GUTTER BRACKETS

GUTTER (mm)	SIDE RAFTER	TOP RAFTER*	MORTAR BRACKET
100 x 75	RBX1/29	RBX1/30	RBX1/31
100 x 100	RBX2/29	RBX2/30	RBX2/31
125 x 100	RBX3/29	RBX3/30	RBX3/31
150 x 100	RBX4/29	RBX4/30	RBX4/31

#### BULLNOSE GUTTER BRACKETS

GUTTER (mm)	SIDE RAFTER	TOP RAFTER*	MORTAR BRACKET
150 x 100	BNG1/29	BNG1/30	BNG1/31



**Special brackets on request.**

\*We advise against the use of Top Rafter Brackets.