

GUTTERCREST

GENERAL INSTALLATION GUIDELINES

Victorian Ogee Gutter

BEFORE YOU START...

We advise that you ensure the fixing background (e.g. fascia board) is securely fixed, level, and able to cope and support the weight of the gutter at full capacity. Also that the roof overhang is correct.

Start at the right hand edge of the building and work to the left (looking externally in elevation). Starting at a stopend or corner if possible.

* **Position of Gutter:** It is at the discretion of the installer what height they would like to fix the lengths of gutter. Figure 1 is an adequate solution and more resistant to sliding snow (**Snow-loading**) than figure 2. However the disadvantage of figure 1 is the fact that it may be possible for rain to over shoot the gutter should it be mounted too low. Figure 2 should overcome these problems.

A decision should be made taking the local climate and average snowfall into consideration. Figure 2 should be favourable for most of the UK.

ADDITIONAL INFORMATION

Buildings without fascias may need one of the below additional brackets. These are available for all sizes of victorian ogee gutter.

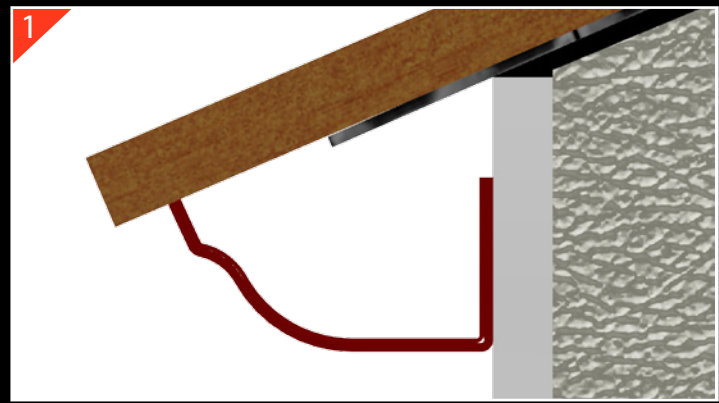
Mortar Brackets: Have spikes which can be hammered directly into an opening in the mortar. An 'L' shaped one piece item which the gutter is mounted to once in position. To be fixed to a true line and level.

Rise & Fall Brackets: Also have spikes, but use threaded bar for height adjustment, it is important that the threaded uprights are all in line and level before mounting the gutter. Not recommended for heavy snowloading as the threaded bar may become a weak spot.

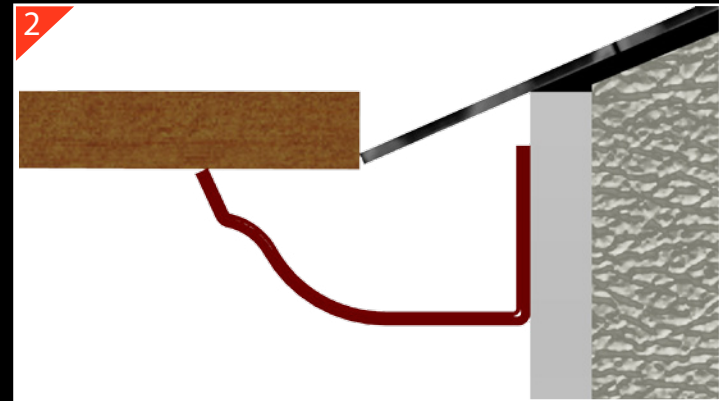
Rafter Brackets: A one piece item which is fixed to the side of the rafter. Spaces between brackets is dictated by the rafter spacing, this should not exceed 900mm.

Gutters of this size often require a specially designed bracket, unlike the above. To discuss your requirements please contact our technical department.

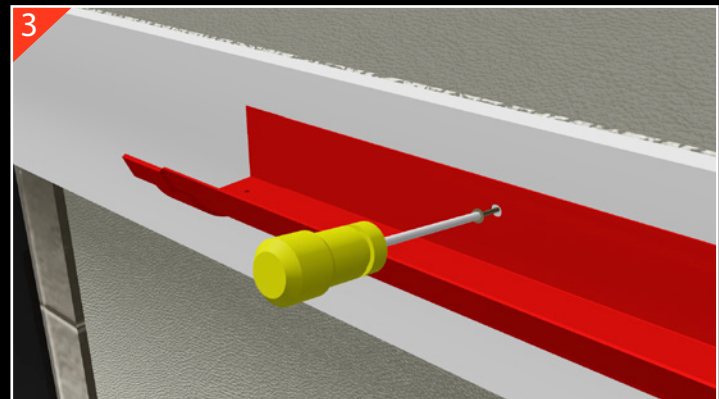
CONT.



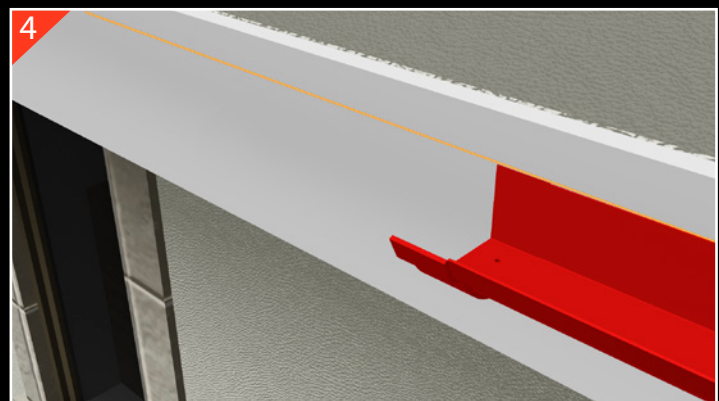
1 A straight edge can be placed along the pitch of the roof to determine the position (height) of the gutter.



2 Alternatively use a spirit level against the lowest point of the roof tile to determine the position the gutter is fixed.*



3 Once the position is established the first length can be fixed (level), directly through the back of the gutter using 38 x 5 stainless steel screws (Guttercrest GM1).



4 Next use a string / laser line, to determine the position of the remaining gutter lengths in the run. We recommend a level fall, If a fall is required - max. 1 : 600.

System Testing: If testing is required it should be done once the system is complete. To test, the outlets should be blocked and the gutters filled to two thirds of capacity. Leave for about 5 minutes and ensure there are no leaks in the joints.

Once satisfied unblock the outlets, discharging the water. This will test the rainwater pipes have no leakage. Any remedial works should be undertaken, and retested until satisfactory. Note any stripped joints should be cleaned with sealant cleaner (GM34).

Storage of coated materials: Guttercrest supplies all products with a protective polythene wrapping, however please make sure that if stored outside it is protected from rainfall and direct sunlight. If water gets inside the packaging then is exposed to the sun, this will permanently 'watermark' the powder coating. Store in a safe place to avoid damage, especially to the coating.

COSHH: All sealants and paints purchased from Guttercrest have the relevant safety information on the labels, however if more in-depth information is required full COSHH sheets can be downloaded from our website.

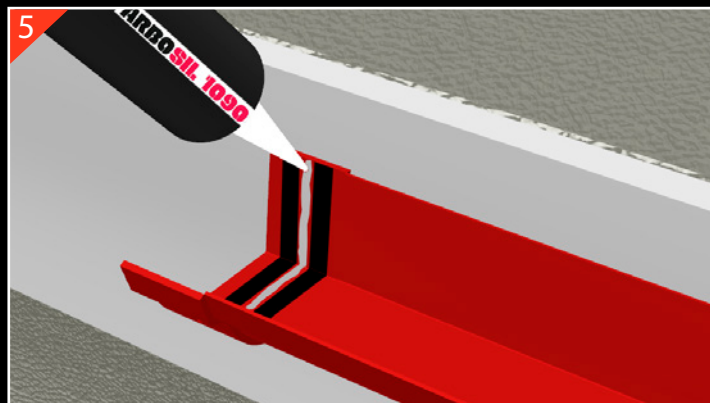
Equipment Required

- Spirit Level / Straight Edge
- Phillips Screwdriver or attachment
- String or Laser line
- Hacksaw or Jigsaw
- Drill with 4.8mm Bit (GM50)
- Mastic Gun
- Rivet Gun (GM67)

Guttercrest Fixings / Sealants

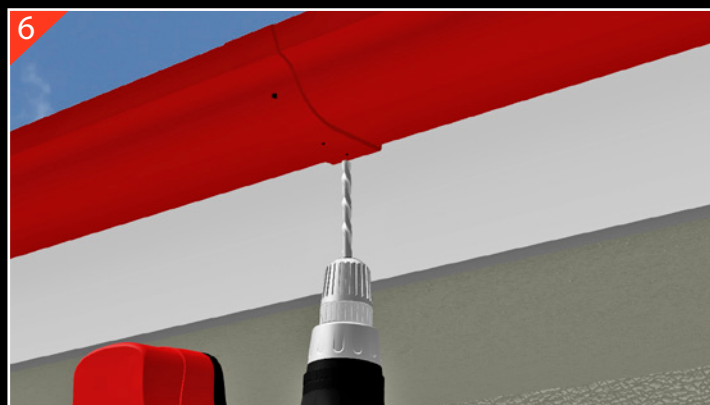
GM1	38 x Nr14 gutter fixing
GM10	4.8mm Ali sealed rivet
GM30	400mm Arbosil 1090 silicone
GM32	12m Arboseal GZ butyl tape
GM40	Touch up paint

If Guttercrest fixings are not used, then wherever possible use stainless steel. Sometimes self drillers need to be carbon steel.

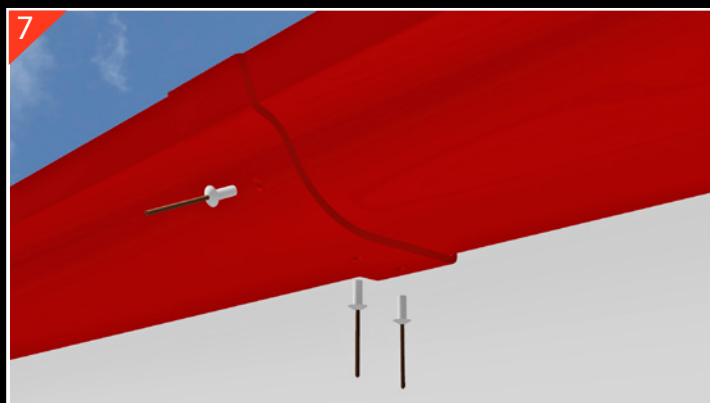


To join the next length of guttering, lay 2 strips of butyl tape (GM32) 10mm apart, inside the female end of the gutter, the tape is manually bedded into the corners of the gutter profile. The 10mm gap is then liberally gun filled with the recommended silicone sealant (GM30). The silicone is left proud with no excess removed.

The male end of the next gutter or accessory is then firmly bedded on to the silicone / butyl joint, ensuring that the top of the married lengths are aligned. Then screw to secure background as previous.



Next drill out the holes marked with indentations on the female end of the gutter (1 in the front and two in the base). Note the holes should be positioned between the two rows of butyl tape, therefore the silicone will secondary seal when the rivets are installed as below.



IMPORTANT

Polyester powder coated gutters should have all rivet heads and cut ends touched up with compatible paint. This is crucial with marine environment coatings.

Touch up paint is available in all colours directly from Guttercrest, Product Code - GM40.